

Stainless Steel



[Single compartment sink](#)
Single compartment sink, 24x24



[Double compartment sink](#)
Double compartment sink, 24x16



[Triple compartment sink](#)
Triple compartment sink, 24x16



[Stainless steel cart](#)
19 levels
Dimensions 27"L x 20"W x 66"H
3" clear between levels
Holds 19-18" x 26" trays



[Stainless steel cart](#)
10 levels
Dimensions 27"L x 20"W x 66"H
6" clear between levels
Holds 10-5" lugs or 10-18" x 26" trays



[Stainless steel cart](#)
6 levels
Dimensions 27"L x 20"W x 41"H
6" clear between levels
Holds 6-5" lugs or 6-18" x 26" trays



[Stainless steel cart](#)
6 levels
Dimensions 27"L x 20"W x 66"H
9" clear between levels
Holds 6-8" lugs or 6-18" x 26" trays



[Stainless steel cart](#)
4 levels
Dimensions 27"L x 20"W x 41"H
9" clear between levels
Holds 4-8" lugs or 4-18" x 26" trays



[Stainless steel platter cart](#)
8 tier
18"L x 32"W x 64"H
5" swivel caster ball bearing wheels



[Stainless steel crisping cart](#)



[Roto cart](#)



[Reinforced roto cart](#)



[Stainless steel single lug cart](#)



[Stainless steel platter cart](#)



[S/S CORNER PROTECTOR 16" HIGH](#)



[Mobile receiving desk](#)



[Receiving desk](#)



[MOBILE DUNNAGE RACK 24"X48"](#)



[FIXED DUNNAGE RACK 24"X48"](#)



[FLOOR MOUNT SINK WITH FOOT PEDALS](#)



[WALL MOUNT SINK WITH KNEE PEDALS](#)



[Overhead rack](#)



[DROP IN HAND WASH SINK WITH NO WINGS](#)



[WALL MOUNT SINK WITH WINGS](#)



[CLEAR PAN RACK PROOFER COVER FOR CART](#)



[CLEAR COVER FOR CRISPING CART](#)
30"x34"x62", 4 zippers



[30"X48" FULL SANI-KLEEN TABLE](#)



[30"X48" FULL SANI-KLEEN TABLE](#)



[30"X48" FULL SANI KLEEN CUTTING](#)



[30"X48" S/S WORK TABLE](#)



[30"X48" S/S WORK TABLE](#)



[30"X48" S/S WORK TABLE](#)



[30"X72" FULL SANI-KLEEN TABLE WITH 4 LEGS](#)



[30"X72" FULL SANI-KLEEN TABLE](#)



[3072FT-4L-F](#)



[30\"X72\" FULL SANI KLEEN CUTTING](#)



[30\"X72\" S/S WORK TABLE WITH 4 LEGS](#)



[30\"X72\" S/S WORK TABLE](#)



[30\"X72\" S/S WORK TABLE WITH 4 LEGS](#)



[30\"X72\" S/S WORK TABLE WITH 4 LEGS AND BOTTOM SHELF](#)



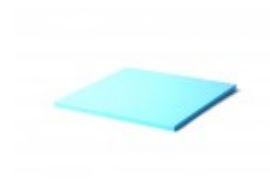
[30\"X72\" S/S WORK TABLE](#)



[30\"X96\" S/S WORK TABLE](#)



[Sani-Kleen Black](#)



[Sani-Kleen Blue](#)



[Sani-Kleen Green](#)



[Sani-Kleen Red](#)



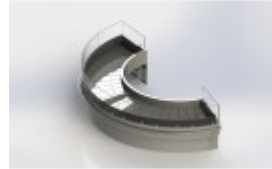
[Sani-Kleen White](#)



[Sani-Kleen Yellow](#)



[Custom Designed Fish Table](#)



[Custom Designed Fish Table](#)



[30" x 48" CABINET WITH BACKSPLASH](#)



[30" x 60" CABINET WITH BACKSPLASH](#)



[30" x 72" CABINET WITH BACKSPLASH](#)



[30" x 84" CABINET WITH BACKSPLASH](#)



[30" x 96" CABINET WITH BACKSPLASH](#)



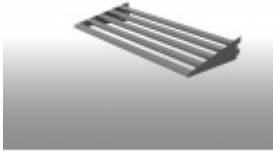
[CANTILEVER SHELF 18"x36"](#)



[CANTILEVER SHELF 18"x48"](#)



[CANTILEVER SHELF 24"x36"](#)



[CANTILEVER SHELF 24"x48"](#)



[FIXED DUNNAGE RACK 18"x36"](#)



[MOBILE DUNNAGE RACK 18"x36"](#)



[FIXED DUNNAGE RACK 18"x48"](#)



[MOBILE DUNNAGE RACK 18"x48"](#)



[FIXED DUNNAGE RACK 24"x36"](#)



[MOBILE DUNNAGE RACK 24"x36"](#)



[UPRIGHT](#)



[UPRIGHT AND SHELF](#)



[LEVER WASTE DRAIN](#)



[WALL MOUNT FAUCET WITH 12 " SPOUT](#)



[FEC-248153-0460GNS](#)



[MIXING VALVE](#)



[S/S BULLET FOOT](#)



[6" GOOSENECK SPOUT, DECK MOUNT](#)



[S/S DROP IN KNIFE POUCH \(FEKP\)](#)



[44" REPLACEMENT HOSE](#)



[SMALL DRAIN WITH TAIL PIECE](#)



[EYEWASH UNIT WITH ADAPTERS](#)



[S/S CLIP ON KNIFE RACK](#)



[STAINLESS STEEL SINK LEG](#)



[KASON DECK MOUNT FAUCET WITH 6" GOOSENECK SPOUT](#)



[72" REPLACEMENT HOLE FOR B133](#)



[OVERFLOW TUBE 11"](#)



[REPLACEMENT SPRAY HEAD ASSEMBLY FOR PRE-RINSE](#)



[PRE-RINSE SPRAY ASSEMBLY](#)



[WOVEN RACK COVER FOR CART](#)



[PAN RACK PROOFER COVER FOR CART](#)



[CORNER SWILL GUARD](#)



[STAINLESS STEEL TWINE SPOOL HOLDER](#)



[TRIPLE COMPARTMENT SINK WITH DRAINBOARDS](#)